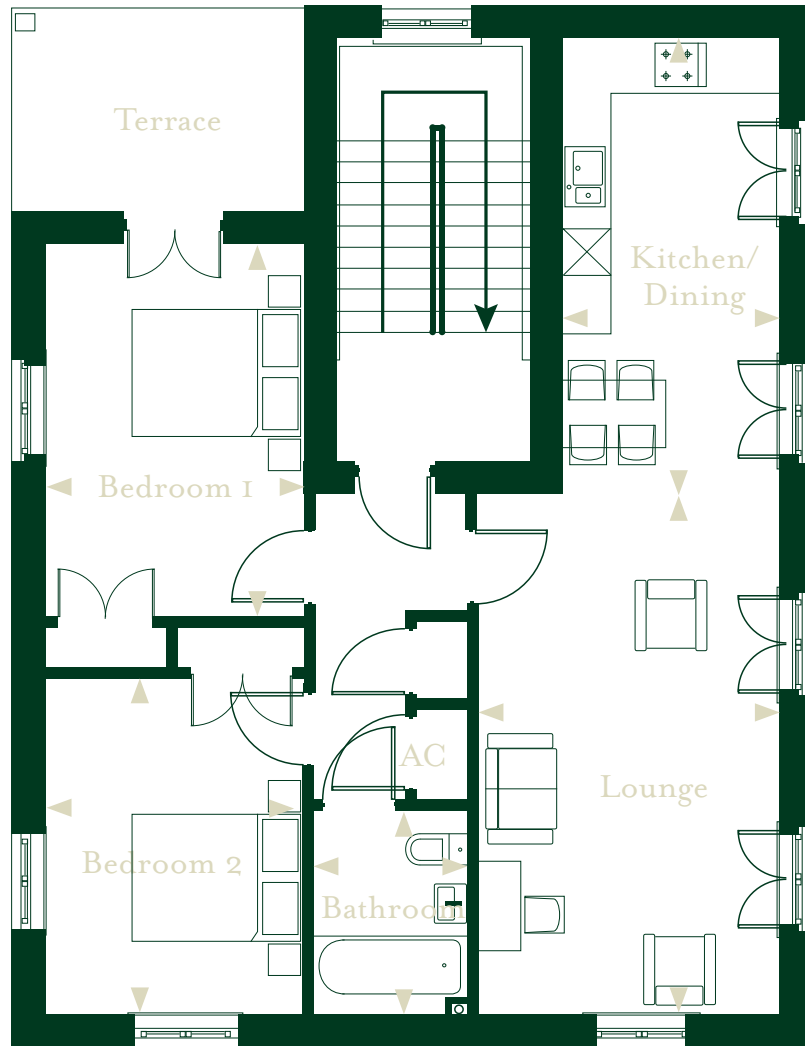


House 49,50 - 77.8sqm  
2 Bedroom Apartment



Floor		Metric	Imperial
Ground	Kitchen/Dining	2.66m x 5.12m	8'7" x 16'7"
	Lounge	3.4m x 6.14m	11'1" x 20'1"
First	Bedroom 1	3.02m x 4.45m	9'9" x 14'5"
	Bedroom 2	3m x 3.94m	9'8" x 12'9"
	Bathroom	1.97m x 2.58m	6'4" x 8'4"

Apartment 49 -  
Garage & drive  
Apartment 50 -  
Allocated parking space



Please note floor plans featured throughout this booklet for Roussillon Park are for general guidance only and are not to scale & should not be relied upon for the purchase of carpets or furnishings. Room dimensions are based on design drawings and are approximate only. ZeroC give notice that particulars including text, photographs, CGI images and floor plans are for guidance only and must not be relied upon as a statement of fact. Floorplans shown throughout this booklet are NOT to scale, in proportion to each other, or to the built form.