

House 5, 7, 9, 35, 37 - 118.4sqm 3 Bedroom House



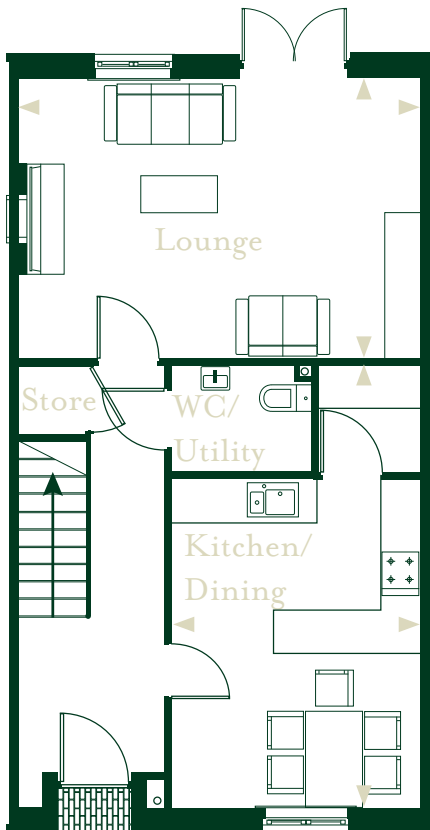
Floor		Metric	Imperial
Ground	Kitchen/Dining	3.44m x 4.48m	11'2" x 14'6"
	Lounge	5.5m x 3.84m	18' x 12'5"
First	Bedroom 1	3.1m x 3.74m	10'1" x 12'2"
	Bedroom 2	3.1m x 3.6m	10'1" x 11'8"
	Bedroom 3	2.3m x 3.84m	7'5" x 12'5"
	Bathroom	2.28m x 2.71m	7'4" x 8'8"

House 5 - Garage

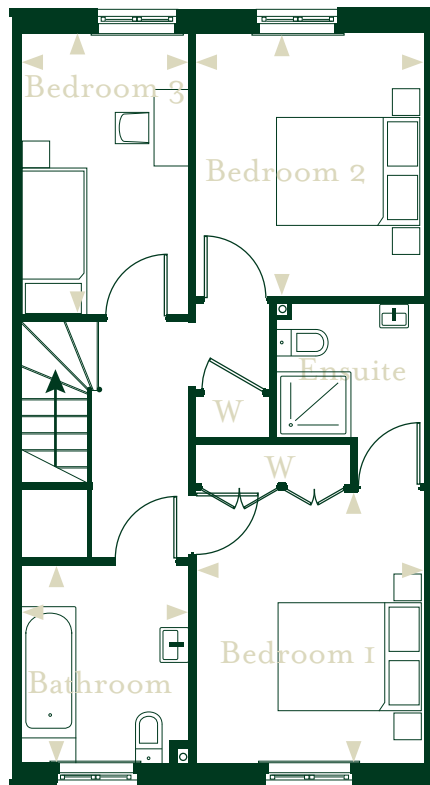
House 7 - Allocated space

House 9 - Garage

Houses 35 & 37 - 2 allocated parking spaces



Ground Floor



First Floor



Plot 5, 7, 9



Plot 35, 37

Please note floor plans featured throughout this booklet for Roussillon Park are for general guidance only and are not to scale & should not be relied upon for the purchase of carpets or furnishings. Room dimensions are based on design drawings and are approximate only. ZeroC give notice that particulars including text, photographs, CGI images and floor plans are for guidance only and must not be relied upon as a statement of fact. Floorplans shown throughout this booklet are NOT to scale, in proportion to each other, or to the built form.