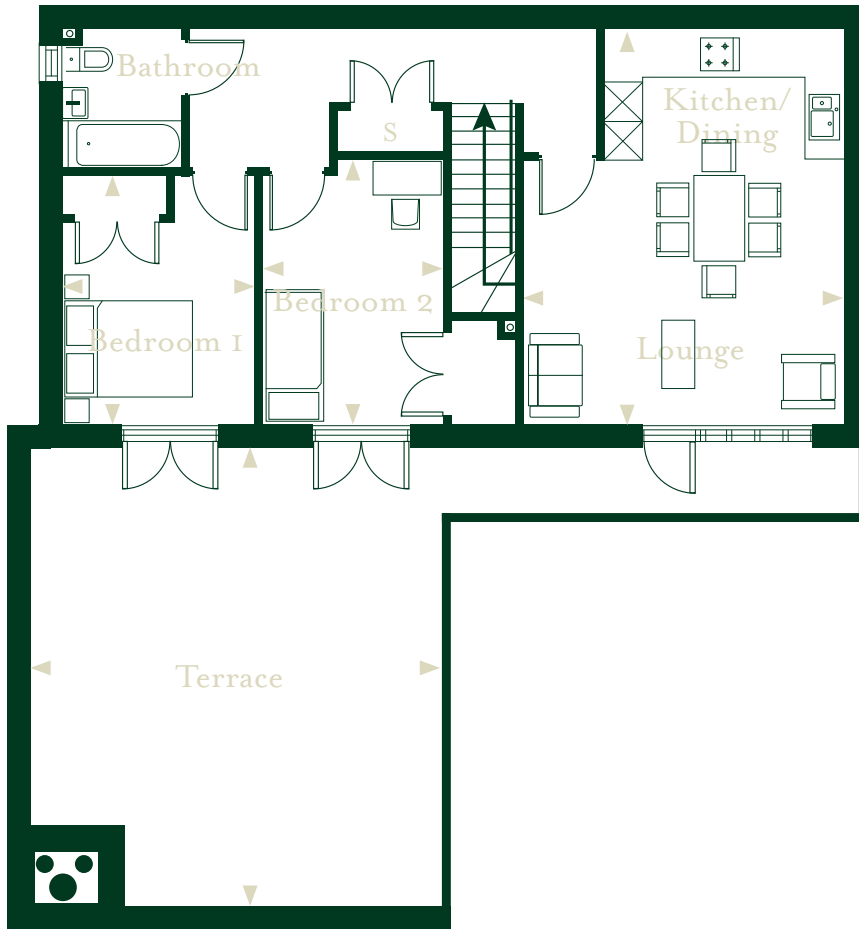


House 39 - 88.3sqm
2 Bed Coach House

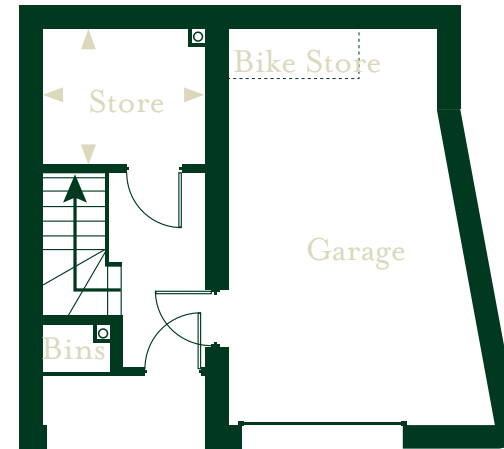


Floor		Metric	Imperial
Ground	Store	2.55m x 2.10m	8'3" x 6'8"
First	Kitchen/Dining	4.96m x 6.09m	16'2" x 19'9"
	Bedroom 1	2.98m x 3.83m	9'7" x 12'5"
	Bedroom 2	2.82m x 4.11m	9'2" x 13'4"
	Bathroom	1.86m x 2.18m	6'1" x 7'1"
	Terrace	6.2m x 7m	20'3" x 22'9"

House 39 - Single Garage



First Floor



Ground Floor



Please note floor plans featured throughout this booklet for Roussillon Park are for general guidance only and are not to scale & should not be relied upon for the purchase of carpets or furnishings. Room dimensions are based on design drawings and are approximate only. ZeroC give notice that particulars including text, photographs, CGI images and floor plans are for guidance only and must not be relied upon as a statement of fact. Floorplans shown throughout this booklet are NOT to scale, in proportion to each other, or to the built form.